



# TACT SWITCH

P/N TSW06360-H

WATERPROOF

## SPECIFICATIONS

Function: Momentary action  
 Contact Arrangement: SPST, Normally Open  
 Termination: SMD version

### Mechanical

Actuation Force: 180/230/280±50grams  
 Life Expectancy: 100K Operations

### Electrical

Contact Rating: 50mA @ 12V DC  
 Dielectric Strength: 250V AC for 1minute  
 Contact Resistance: 100mΩ Max.  
 Insulation Resistance: 100MΩ Min.  
 Travel: 0.3±0.1mm

### Environmental

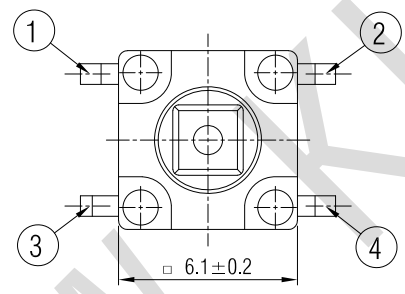
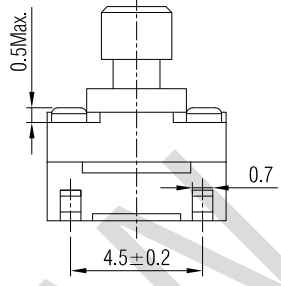
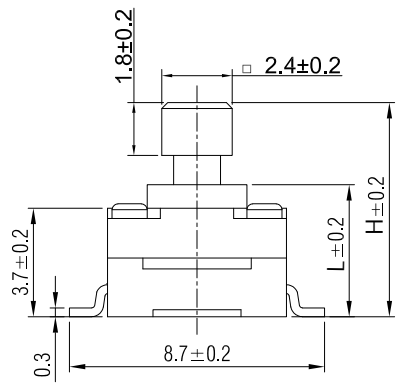
Operating Temperature: -25~+70°C  
 Relative Humidity: (40°C) ≤95%

### Materials

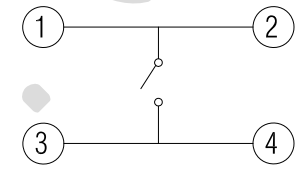
- 7.Cover: Brown GP.PPA
- 6.Stem: Brown GP.PPA
- 5.Washer: Rubber
- 4.Waterproof membrane: PIF membrane
- 3.Contact: Stainless Steel with Silver Cladding
- 2.Holder: Brown GP.PPA
- 1.Terminal: Copper with Silver Cladding

### Packaging

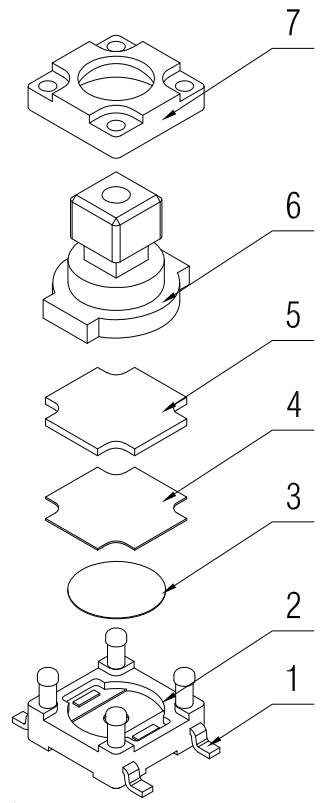
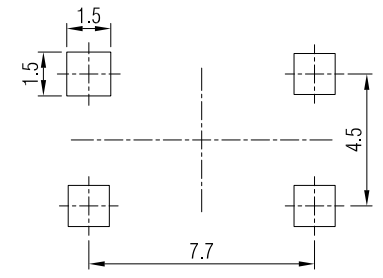
Bulk Package  
 Inner Package: Plastic bag  
 Outer Package: Carton



### CIRCUIT DIAGRAM



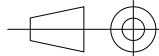
### P.C.B. LAYOUT



H	7	7.3	7.5
L	4.2	4.5	4.7



# WENZHOU KHAN ELECTRONIC

VERSION		PROJECTION	DESIGN	Shuqing Zhu
KH14FE22E			CHECKED	Wei Lin
SCALE	SIZE	 Dimensions are shown:mm(inches)	APPROVED	Johan Xu
4:1	A4		2022.02.24	